

Museum of Modern Literature

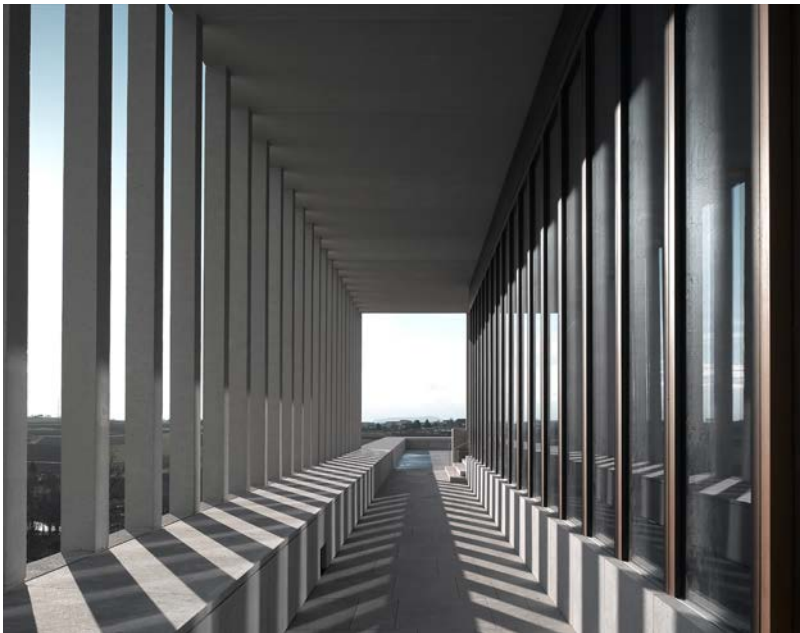
Marbach am Neckar, Germany 2001–2006

The Museum of Modern Literature is located in Marbach, on a rock plateau overlooking the Neckar River valley. As the birthplace of Friedrich Schiller, the town's park already held the Schiller National Museum, built in 1903, and the Archive for German Literature, built in the 1970s. Displaying artefacts from the extensive Twentieth Century collection from the Archive for German Literature, notably the original manuscripts of Franz Kafka's 'The Trial' and Alfred Döblin's 'Berlin Alexanderplatz', the new museum also provides panoramic views across the landscape.

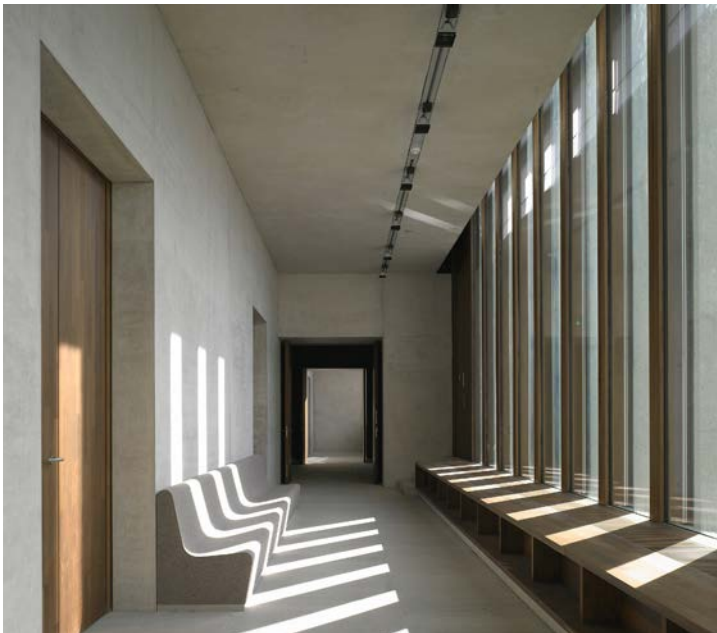
Embedded in the topography, the museum reveals different elevations, reacting to its immediate context. The steep slope of the site creates an intimate, shaded entrance on the brow of the hill facing the Schiller National Museum with its forecourt and park, and a grander, more open series of tiered spaces facing the valley below. On the highest terrace the building appears as a pavilion, providing the entrance to the museum. Slender concrete supports articulate the façade and enclose the entrance. The route through the entrance pavilion and down towards the introverted exhibition galleries gradually adjusts from daylight to the artificial light, necessary for the fragile exhibits displayed. These timber-panelled exhibition spaces are connected to naturally lit, glazed loggias, contrasting the internalised world of texts and manuscripts with the valley beyond.

The walls and ceilings are fair-faced, in-situ cast concrete. Limestone is used internally for the floors, and is also used as an aggregate in the pre-cast, sandblasted concrete elements of the façade. The use of enduring, solid materials gives the architecture a strong, physical presence and supports the notion of preserving the collection for future generations.

Competition	2001–2002
Project start	2002
Completion	2006
Gross floor area	3,800 m ²
Client	Deutsche Schillergesellschaft e.V.
Architect	David Chipperfield Architects Berlin



Museum of Modern Literature



Museum of Modern Literature

David Chipperfield Architects

Museum of Modern Literature Marbach am Neckar, Germany 2001–2006

Competition	2001–2002
Project start	2002
Construction start	2003
Completion	2006
Gross floor area	3,800 m ²
Client	Deutsche Schillergesellschaft e.V.
Project controlling	Drees & Sommer Projektmanagement und Bautechnische Beratung, Stuttgart
User	Deutsches Literaturarchiv Marbach
Architect	David Chipperfield Architects Berlin
Partner/Directors	David Chipperfield, Harald Müller, Alexander Schwarz (Design lead)
Project architects	Christian Helfrich (Competition), Martina Betzold (Concept design to Technical design, Site design supervision)
Project team	Wolfgang Baumeister, Daniela Brun, Laura Fogarasi, Hannah Jonas, Barbara Koller
Competition team	Martina Betzold, Mirjam von Busch, Andrea Hartmann, Franziska Rusch, Tobias Stiller, Vincent Taupitz <i>In collaboration with</i>
Executive architect	Wenzel + Wenzel Freie Architekten, Karlsruhe (Technical design to Construction supervision)
Structural engineer	IGB Ingenieurgruppe Bauen, Karlsruhe
Services engineer	Jaeger, Mornhinweg + Partner Ingenieurgesellschaft, Stuttgart Ibb Burrer + Deuring Ingenieurbüro GmbH, Ludwigsburg
Building physics	Müller-BBM GmbH, Berlin
Fire consultant	Hagen Ingenieurgesellschaft für Brandschutz mbH, Kleve
Exhibition planning	Element GmbH Architektur Produkt- und Ausstellungs- gestaltung, Basel