

# Neues Museum

Berlin, Germany 1993–2009

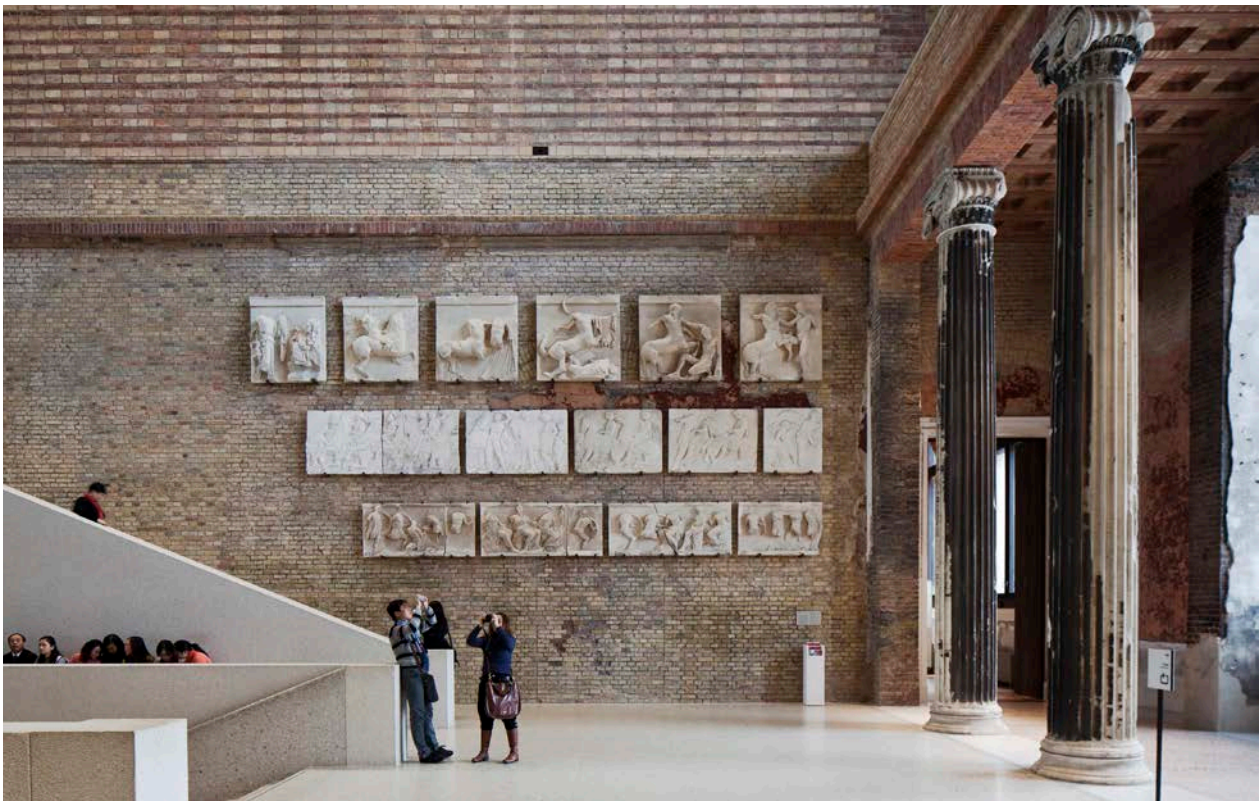
The Neues Museum on Berlin's Museum Island was designed by Friedrich August Stüler and built between 1841 and 1859. Extensive bombing during the Second World War left the building in ruins, with entire sections missing completely and others severely damaged. Few attempts at repair were made after the war, and the structure was left exposed to nature. In 1997, David Chipperfield Architects won the international competition for the rebuilding of the Neues Museum in collaboration with Julian Harrap.

The key aim of the project was to recomplete the original volume, and encompassed the repair and restoration of the parts that remained after the destruction of the Second World War. The original sequence of rooms was restored with new building sections that create continuity with the existing structure. The archaeological restoration followed the guidelines of the Charter of Venice, respecting the historical structure in its different states of preservation. All the gaps in the existing structure were filled in without competing with the existing structure in terms of brightness and surface. The restoration and repair of the existing is driven by the idea that the original structure should be emphasized in its spatial context and original materiality – the new reflects the lost without imitating it.

The new exhibition rooms are built of large format pre-fabricated concrete elements consisting of white cement mixed with Saxonian marble chips. Formed from the same concrete elements, the new main staircase repeats the original without replicating it, and sits within a majestic hall that is preserved only as a brick volume, devoid of its original ornamentation. Other new volumes – the Northwest wing, with the Egyptian court and the Apollo risalit, the apse in the Greek courtyard, and the South Dome – are built of recycled handmade bricks, complementing the preserved sections. With the reinstatement and completion of the mostly preserved colonnade at the Eastern and Southern side of the Neues Museum, the pre-war urban situation is re-established to the East. A new building, the James Simon Galerie, between the Neues Museum and the Kupfergraben canal, echoes the urban situation of the site pre-1938.

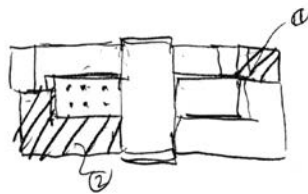
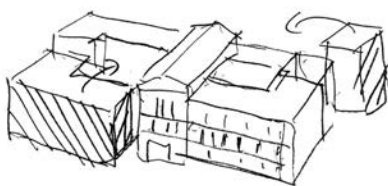
In 2009, after more than sixty years as a ruin, the Neues Museum reopened to the public as the third restored building on Museum Island, exhibiting the collections of the Egyptian Museum and the Museum of Pre- and Early History.

Competition	1993–1994 (Phase 1) 1994–1997 (Phase 2 and 3)
Project start	1998
Completion	2009
Gross floor area	20,500 m <sup>2</sup>
Client	Stiftung Preußischer Kulturbesitz represented by the Bundesamt für Bauwesen und Raumordnung
User	Staatliche Museen zu Berlin
Architect	David Chipperfield Architects London & Berlin in collaboration with Julian Harrap



Neues Museum





RE-ESTABLISHMENT OF FORM + FIGURE

# David Chipperfield Architects

Neues Museum Berlin, Germany 1993–2009

Competition	1993–1994 (Phase 1) 1994–1997 (Phase 2 and 3)
Project start	1998
Construction start	2003
Completion	2009
Gross floor area	20,500 m <sup>2</sup>
Client	Stiftung Preußischer Kulturbesitz represented by the Bundesamt für Bauwesen und Raumordnung
Project controlling User	Ernst & Young Real Estate GmbH Staatliche Museen zu Berlin
Architect	David Chipperfield Architects London & Berlin In collaboration with Julian Harrap
Project architect Competition team	<i>Competition, Phase 1</i> Jamie Fobert Renato Benedetti, Jan Coghlan, Eamon Cushmanan, Madeleine Lambert, Genevieve Lilley, Jonathan Sergison, Steven Shorter, Zoka Skorup, Simon Timms
Project architect Project team	<i>Competition, Phase 2 and 3</i> Mark Randel Philipp Auer, Franz Borho, Nathalie Bredella, An Fonteyne, Robin Foster, Mario Hohmann, Martin Kley, Harvey Langston-Jones, Patrick McInerney, Ian McKnight, Claudia Marx, Guy Morgan-Harris, Rik Nys, Eva Schad, Alexander Schwarz, Haewon Shin, Graham Smith, Henning Stummel, Giuseppe Zampieri, Mark Zogrotzki
Directors Project architect Project team	<i>Outline proposals</i> Harald Müller, Eva Schad Eva Schad Isabel Karig, David Saik, Alexander Schwarz (Design lead), Florian Steinbächer
Directors Project architects Project team	<i>Detailed proposals</i> Harald Müller, Eva Schad Martin Reichert, Eva Schad Janna Bunje, Adrian Dunham, Harald Eggers, Annette Floherschütz, Michael Freytag, Anke Fritzsich, Isabelle Heide, Christoph Hesse, Christiane Melzer, Franziska Rusch, Alexander Schwarz (Design lead), Christian Stiller

# David Chipperfield Architects

Neues Museum Berlin, Germany 1993–2009

## *Production information*

Directors	Martin Reichert, Eva Schad, Alexander Schwarz (Design lead)
Project architects	Martin Reichert, Eva Schad
Project team	Christiane Abel, Arnaud Bauman, Thomas Benk (Historic constructions), Johannes Bennke, Daniela Bruns, Katja Buchholz, Nils Dallmann, Florian Dirschedl, Maryla Duleba, Matthias Fiegl (MEP), Annette Flohrschütz, Michael Freytag (Team leader new construction), Anke Fritsch (Team leader restoration), Katja Gursch, Anne Hengst, Michael Kaune, Regine Krause, Paul Ludwig, Martina Maire, Marcus Mathias, Werner Mayer-Biela, Virginie Mommens, Harald Müller, Max Ott, Peter Pfeiffer, Martina Pongratz, Robert Ritzmann, Mariska Rohde, Franziska Rusch, Elke Saleina, Sonia Sandberger, Antonia Schlegel, Gunnar Schmidt, Lukas Schwind, Doreen Souradny, Annika Thiel, Barbara Witt, Sebastian Wolf

## *In collaboration with*

Quantity surveyor	Nanna Fütterer for David Chipperfield Architects
Executive architect	Lubic & Woehrlin GmbH, Berlin
Restoration consultant	Pro Denkmal GmbH, Berlin / Bamberg
Structural engineer	IGB Ingenieurgruppe Bauen, Karlsruhe / Berlin
Services engineer	Jaeger, Mornhinweg + Partner Ingenieurgesellschaft, Berlin Kunst und Museumsschutz Beratungs- & Planungs GmbH, Berlin
Building physics, Acoustics	Ingenieurbüro Axel C. Rahn GmbH, Berlin
Lighting consultant	Kardorff Ingenieure Lichtplanung, Berlin
Exhibition planning	architetto Michele de Lucchi S.r.L., Milan
Landscape architect	Levin Monsigny Landschaftsarchitekten, Berlin