

# Neue Nationalgalerie refurbishment

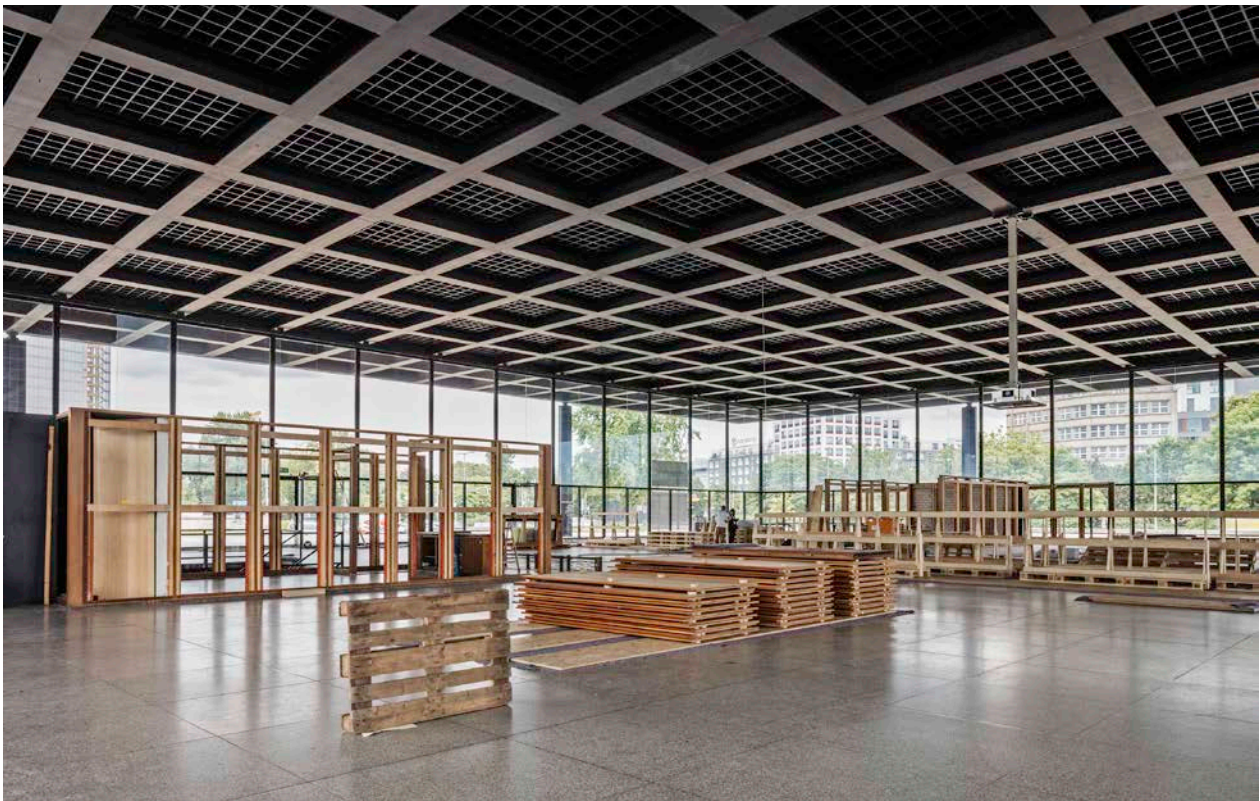
Berlin, Germany, 2012–2019

The Neue Nationalgalerie in Berlin's Kulturforum is one of the icons of twentieth-century architecture. The only building realised by Mies van der Rohe in Europe after his emigration to the USA, the Neue Nationalgalerie has been dedicated to the art of the twentieth century since its opening in 1968. After almost 50 years, the damage, deficiencies and deficits of intensive use are to be carefully and sustainably addressed, within the restrictions imposed by the building's status as a listed monument. The refurbishment and modernisation aims for maximum preservation of the existing fabric, with minimum visual compromise to the building's original appearance.

In order to upgrade the services to current museum standards, the stone cladding and all the interior fittings were to be dismantled in 2015/16. Tens of thousands of original building components are being removed and restored, before being reinstalled in their precise original positions. The services being updated include air-conditioning, artificial lighting, security, and visitors' facilities, including cloakroom, café and museum shop, as well as improving disabled access and art handling.

The key to the complex planning process for this project is finding a balance between the requirements of current museum usage and the importance of the Neue Nationalgalerie as a listed monument. Though the essential new interventions remain subordinate to the existing design of the building, they are nevertheless discreetly legible as contemporary elements. The refurbishment does not represent a new interpretation, but rather a respectful repair of this landmark of the International Style.

Tender procedure	2012
Project start	2012
Completion due	2019
Opening	2020
Gross floor area	13,900 m <sup>2</sup>
Client	Stiftung Preußischer Kulturbesitz represented by the Bundesamt für Bauwesen und Raumordnung
User	Staatliche Museen zu Berlin
Architect	David Chipperfield Architects Berlin



Neue Nationalgalerie refurbishment

# David Chipperfield Architects

Neue Nationalgalerie refurbishment Berlin, Germany 2012–2019

Tender procedure	2012
Project start	2012
Construction start	2016
Completion due	2019
Opening due	2020
Gross floor area	13,900 m <sup>2</sup>
Client	Stiftung Preußischer Kulturbesitz represented by the Bundesamt für Bauwesen und Raumordnung
Project controlling	KVL Bauconsult GmbH, Berlin
User	Staatliche Museen zu Berlin
Architect	David Chipperfield Architects Berlin
Partners	David Chipperfield, Martin Reichert, Alexander Schwarz (Design lead)
Project architects	Daniel Wendler and Michael Freytag (Concept design to Technical design, Site design supervision)
Project team	Marianne Akay-Arslantepe, Alexander Bellmann, Thomas Benk, Martina Betzold, Matthias Fiegl, Anke Fritzsich, Dirk Gschwind, Anne Hengst, Martijn Jaspers, Cyril Kriwan, Franziska Michalsky, Maxi Reschke, Elke Saleina, Joshua Saunders <i>In collaboration with</i>
Executive architect	BAL Bauplanungs und Steuerungs GmbH, Berlin (Procurement, construction supervision) Project management: Kerstin Rohrbach
Restoration consultant	Pro Denkmal GmbH, Berlin
Structural engineer	GSE Ingenieurgesellschaft mbH Saar, Enseleit und Partner, Berlin
Services engineer	Ingenieurgesellschaft W33 mbH with Domann Beratende Ingenieure GmbH, Berlin
Building physics	Müller-BBM GmbH, Berlin
Acoustic consultant	Akustik-Ingenieurbüro Moll GmbH, Berlin
Fire consultant	HHP West Beratende Ingenieure GmbH, Bielefeld
Façade consultant	DS-Plan, Stuttgart
Lighting consultant	Arup Deutschland GmbH, Berlin
Landscape architect	TOPOS Stadtplanung Landschaftsplanung Stadtforschung, Berlin